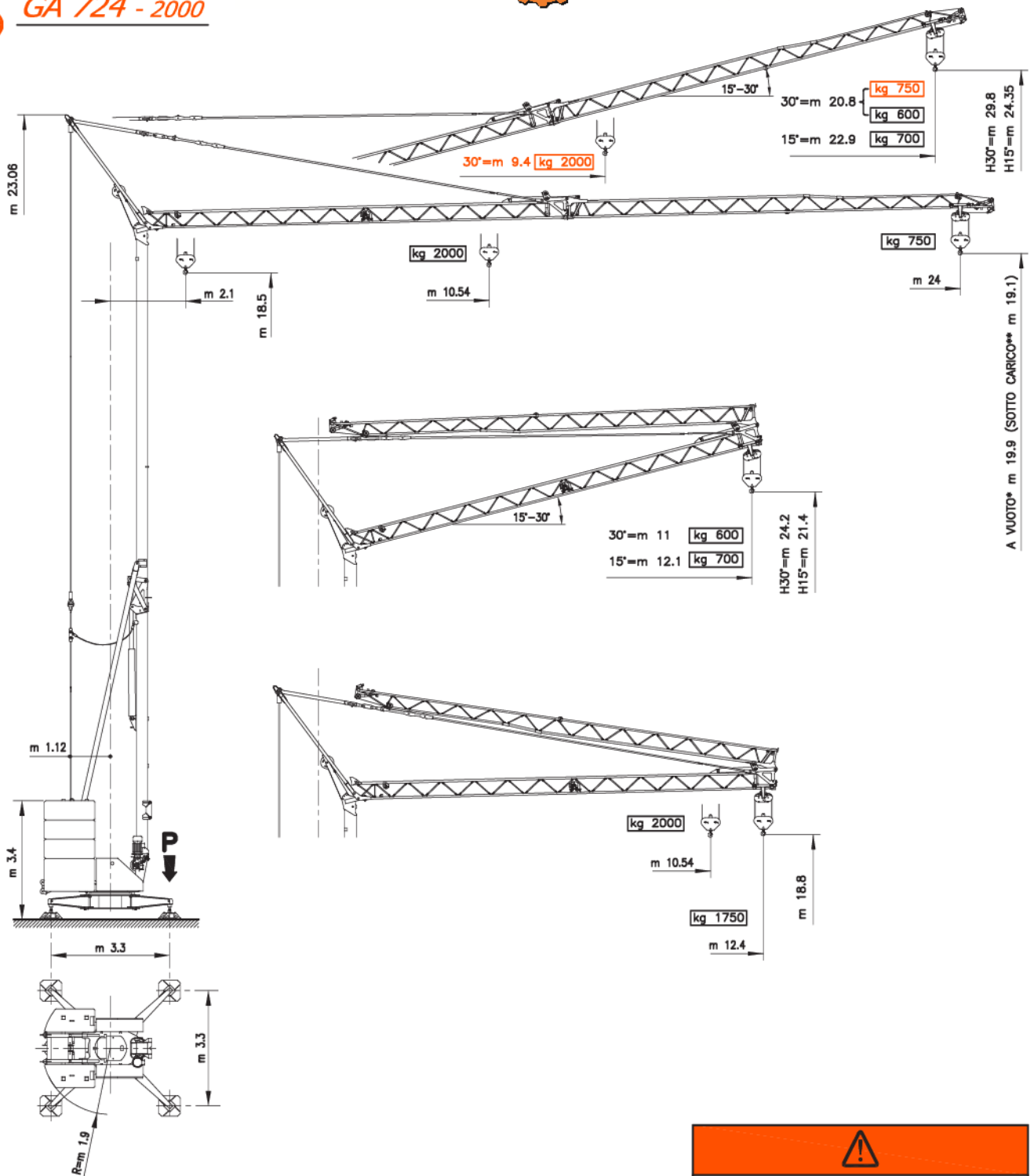


Burkowski


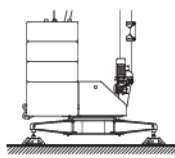
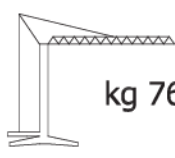
GA 724 - 2000




* SIN CARGA OFF-LOAD UNBELASTET A VIDE
 ** CARGADO LOADED BELASTET EN CHARGE


!
 In arancione valori configurazione con dispositivo per 30°
 En valores de configuracion naranja con dispositivo para 30°
 In orange, configuration values with device for 30°
 In orange, Konfigurationswerte mit Einrichtung fur 30°
 En rouge le valeurs de configuration avec dispositif pour 30°


P	
kg 13050 <i>In servizio</i> En servicio In service In betrieb En service	kg 10500 <i>Fuori servizio</i> Fuera de servicio Out of service Außer betrieb Hors service


	
 <p>N° 6x1519 N° 2x2620 kg 22004</p>	 <p>kg 7650</p>

Antriebe

MOVIMENTO MOVIMIENTO MOVEMENT BEWEGUNG MOUVEMENT	ALIMENTAZIONE ALIMENTACION OPERATING VOLTAGE BETRIEBSSPANNUNG TENSION DE SERVICE	PRESTAZIONI FUNCIONAMIENTOS PERFORMANCES LEISTUNGEN EXÉCUTIONS	
---	---	---	---

SOLLEVAMENTO ELEVACION – HOISTING HEBEN – LEVAGE  INVERTER	230 - 400 V 50 Hz	230 V	1 ^a m/1' - kg	2 ^a m/1' - kg	3 ^a m/1' - kg	4 ^a m/1' - kg	kW 9.2
		400 V	4	12	20		
			2000	2000	750		
		4	24	37	46		
			2000	2000	750	600	

CARRELLO CARRILLO – JIB TROLLEY LAUFKATZE – DISTRIBUTION  INVERTER	230 - 400 V 50 Hz	1 ^a m/1'	2 ^a m/1'	3 ^a m/1'	kW 2.2
		19	30	54	

ROTAZIONE ROTACION – SLEWING DREHEN – ORIENTATION  INVERTER	230 - 400 V 50 Hz	1 ^a g/1'	2 ^a g/1'	3 ^a g/1'	kW 2.2
		0 → 0.15	0.15 → 0.60	0.60 → 0.85	



Conforme alle direttive
CEE sul livello acustico
2000/14/CE


Conforme con las directivas
CEE sobre el nivel acustico

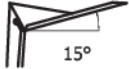
In compliance with the EEC
instructions on noise level

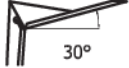
Gemass EWG-Richtlinien für
den Schall-Leistungspegel

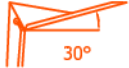
Conforme aux directives CEE
sur le niveau acoustique

Lastkurven

	m	2.1	5	10.5	11	12	13	15	17	19	21	22	23	24
	kg	2000			1907	1720	1565	1321	1138	996	883	834	790	750

	m	2.1	5	7	9	11	13	15	17	19	20	21	22	22.9
	kg	700												

	m	2.1	5	7	9	11	13	15	16	17	18	19	20	20.8
	kg	600												

	m	2.1	5	7	9.4	11	13	15	16	17	18	19	20	20.8
	kg	2000			1790	1462	1229	1055	919	863	811	765	750	

Kraftbedarf

	3 kW 230 V - 50 Hz	12 kW 400 V - 50 Hz
---	-----------------------	------------------------

GA 724 - 2000

Con riserva di modifiche
documento commerciale
non vincolante

Derecho de modificaciones reservadas
documento comercial no contractual

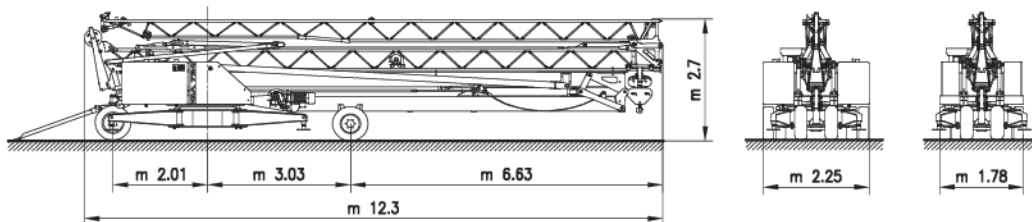
Subject to change without notice
commercial document not legally
binding

Anderungen vorbehalten
Unverbindliches
Vertriebsdokument

Modifications réservées
document commercial
non contractuel

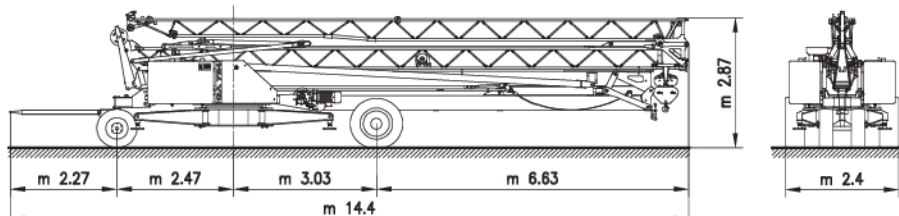
Transport

5
km/h



FB25K2

25
km/h



Montage

